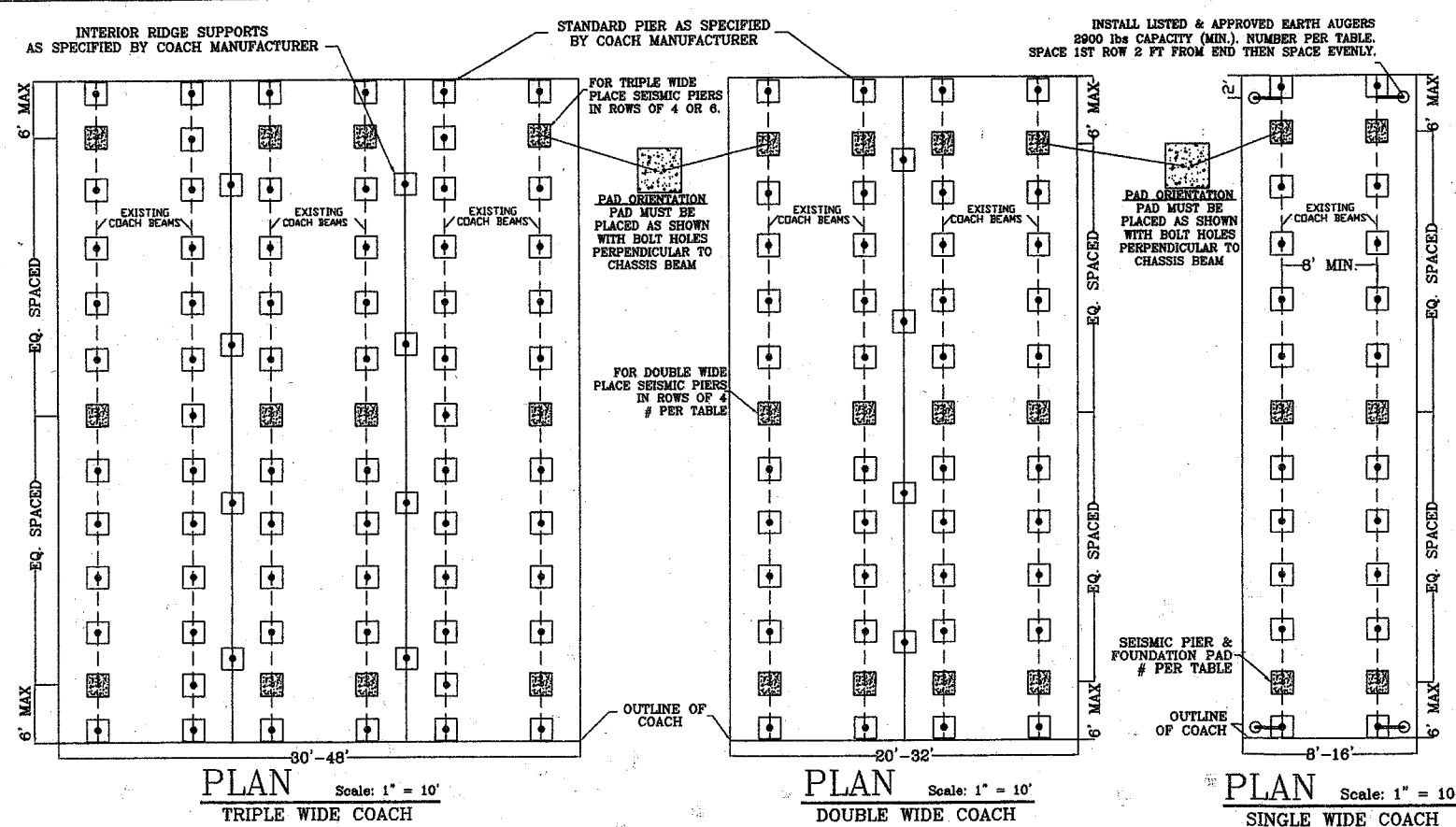


ROCK SOLID ENGINEERING, INC.
CIVIL & GEOTECHNICAL CONSULTANTS
Foundation Engineering • Site Assessments • Manufactured Home Foundations • Expert Witness
1100 MAIN STREET, SUITE A, WATSONVILLE, CA. 95076 (831) 724-5868

COMMERCIAL COACH FOUNDATION SYSTEM (SPA 30-6F)

1



GENERAL NOTES:
REFERENCE: CALIFORNIA CODE OF REGULATIONS, TITLE 25 AND C.B.C. 2007, CHAPTER 18.

- DESIGN LOADS SHALL BE CONSISTENT WITH LOCAL REQUIREMENTS WHERE INSTALLED. THE FOLLOWING DESIGN LOADS ARE INCORPORATED HEREIN:
FLOOR LIVE LOAD: 50 PSF ROOF LIVE LOAD: 30PSF - 100 PSF AS LISTED IN TABLE
SEISMIC DESIGN CATEGORY: D BASIC WIND SPEED & EXPOSURE: 85-100MPH AS LISTED IN TABLE
SITE CLASS D $S_s=1.5$ $S_{ds}=1.4$ $F_a=1.4$ $V=0.215W$
- FOOTINGS ARE TO BE SUPPORTED BY EITHER FIRM, UNSATURATED, UNDISTURBED SOIL OR COMPACTED FILL, ASPHALT OR CONCRETE. FOOTINGS ARE DESIGNED FOR 1000 PSF BEARING CAPACITY AND SHALL BE COMPATIBLE WITH LOCAL SOIL CONDITIONS. ALL FOOTINGS SHALL BE FOUNDED IN ACCORDANCE WITH H.C.D. GUIDELINES AND TITLE 25.
- STRUCTURAL STEEL:
 - SHALL CONFORM TO ASTM A36 $F_y = 36$ KSI MINIMUM.
 - SHALL BE FABRICATED ACCORDING TO AISC SPECIFICATIONS.
 - SHALL BE WELDED ACCORDING TO AWS SPECIFICATIONS:
 - ELECTRODES: E70
 - PLATES: ASTM A36
 - BOLTS: STANDARD ASTM A307
 - THREADED ROD: COLD DRAWN LOW CARBON WELDABLE
 - ALL METAL COMPONENTS INCLUDING NAILS & SCREWS ETC. ARE TO BE PROTECTIVE COATED.
- THE C.P. SEISMIC PIER SHALL BE LISTED & LABELED BY BSK ASSOCIATES FOR THESE ULTIMATE LOADS:
A. 7" THRU 18 INCH PIERS: 3203 LBS. (STRONG DIR), 2273 (WEAK DIR), 18,000 VERTICAL
B. 19 INCH X-LARGE PIER: 1553 LBS. (STRONG DIR.) 1462 (WEAK DIR), 18,000 VERTICAL
- THIS FOUNDATION SYSTEM IS FOR PLACING COMMERCIAL COACHES CONSTRUCTED WITH LONGITUDINAL OR CROSS JOISTS.
- THIS FOUNDATION SYSTEM IS DESIGNED TO BE CONSTRUCTED ON A FAIRLY LEVEL SITE WITH NO EXISTING SOIL PROBLEMS. SEE NOTE 2 AND TITLE 25, SECTION 1334.
- STANDARD PIER & FOOTING SPACING PER COACH MANUFACTURER'S INSTALLATION MANUAL. WITHOUT MANUAL, SPACING OF STANDARD PIERS TO BE DETERMINED BY TITLE 25, SECTION 1335.5.

FOUNDATION PAD NOTES:

- IN-GROUND CONCRETE FOUNDATION PADS
 - MINIMUM COMPRESSIVE STRENGTH: 2000 PSI AT 28 DAYS.
 - MINIMUM PAD SIZE IS 24"x24"x12".
- FOUNDATION PADS SHALL BE EXCAVATED INTO FIRM, UNDISTURBED NATIVE SOILS OR COMPACTED FILL. WHEN A SOIL REPORT IS REQUIRED BY THE LOCAL JURISDICTION, THE SUBGRADE SHALL BE PREPARED IN ACCORDANCE WITH THE SOIL REPORT.
- THE FOUNDATION PADS SHALL BE ORIENTED AS SHOWN ON THE PLAN VIEW DRAWING WITH THE BOLT HOLES PERPENDICULAR TO THE CHASSIS BEAM. SEE PLAN VIEW.
- WHEN THE ENTIRE COACH IS TO BE FOUNDED ON A CONCRETE SLAB, THE FOLLOWING SPECIFICATIONS MAY BE USED TO ATTACH EACH C.P. SEISMIC PIER TO THE CONCRETE SLAB:
 - ATTACH WITH TWO 1/2" DIAM. ITW RAMSET/REDHEAD TRUBOLT WEDGE ANCHORS
 - MINIMUM EMBEDMENT = 2 3/4"
 - MINIMUM CONCRETE THICKNESS = 3 3/4"
 - MINIMUM EDGE DISTANCE = 2-9/16"

COACH SIZE NOTES:

- UNLESS APPROVED BY ROCK SOLID ENGINEERING, INC., THE ROOF PITCH SHOULD NOT EXCEED:
 - SINGLE WIDES: 3:12
 - ALL DOUBLE & TRIPLE WIDES: 3:12
- FOR ANY COACH SIZE OTHER THAN AS SHOWN ON THIS PLAN OR REFERENCED IN THE TABLE, THE LAYOUT SHALL BE REVIEWED & APPROVED BY ROCK SOLID ENGINEERING, INC.

INSPECTION REQUIREMENTS:

- THE DESIGN OF THIS SYSTEM IS BASED ON STANDARD COMMERCIAL COACHES AS BUILT BY THE MANUFACTURER. SITE BUILT ADDITIONS HAVE NOT BEEN INCLUDED IN THIS DESIGN.
- ALL DIMENSIONS INCLUDED ON THIS PLAN, INCLUDING COACH SIZE, ROOF HEIGHT AND PIER HEIGHT, SHOULD BE FIELD VERIFIED BY THE LOCAL BUILDING OFFICIAL. ANY DISCREPANCIES SHOULD BE IMMEDIATELY BROUGHT TO THE ENGINEER'S ATTENTION.
- THE BUILDING PAD SHOULD BE INSPECTED TO ENSURE THAT PROPER SOIL CONDITIONS AND DRAINAGE PATTERNS HAVE BEEN ESTABLISHED IN ACCORDANCE WITH TITLE 25 & THE COACH INSTALLATION MANUAL.

COACH SIZE	ROOF PITCH	ROOF LIVE LOAD (PSF)				WIND LOAD (MPH, EXP)				
		30	40	40	100	85B	85C	100B	100C	
SINGLE WIDES	UP TO 49'	3:12	4	4	4	4	4	4	4	4
			6	4	6	4	6	4	6	4
			6	4	6	4	6	4	6	4
			8	4	8	4	8	4	10	6
SINGLE WIDES	UP TO 40'	3:12	4	4	4	4	4	4	6	4
			6	4	6	4	6	4	8	4
			6	4	6	4	6	4	8	4
			8	4	8	4	8	4	12	6

COACH SIZE	ROOF PITCH	ROOF LIVE LOAD (PSF)				WIND LOAD (MPH, EXP)				
		30	40	40	100	85B	85C	100B	100C	
DOUBLE WIDES	UP TO 48'	3:12	8	8	8	12				
			12	12	12	12				
			16	16	16	16				
DOUBLE WIDES	UP TO 46'	3:12	8	8	8	12				
			12	12	12	16				
			16	16	16	20				
DOUBLE WIDES	UP TO 44'	3:12	8	12	12	12				
			12	12	12	16				
			16	16	16	24				
TRIPLE WIDES	UP TO 48'	3:12	8	12	12	16				
			12	16	16	20				
			16	16	16	24				
TRIPLE WIDES	UP TO 44'	3:12	8	12	12	16				
			12	16	16	20				
			16	20	20	30				

TABLE NOTES

TO USE TABLE, FIND COACH WIDTH THEN LENGTH. FOLLOW ROW ACROSS TO DESIGN LOAD. READ TOTAL NUMBER OF C.P. SEISMIC PIERS AND TIEDOWNS (SINGLE WIDES ONLY) REQUIRED. SEE PLAN ABOVE FOR PLACEMENT OF C.P. SEISMIC PIERS AND TIEDOWN SPECIFICATIONS.

COACH SIZES REFER TO NOMINAL SIZES THAT ARE COMMONLY MANUFACTURED. IF THE EXACT SIZE OF THE COACH IS NOT LISTED, CHECK THE NEXT HIGHER OR LOWER SIZE AND USE THE ONE THAT REQUIRED MORE PIERS.

THE TIEDOWNS SHALL BE LISTED & INSTALLATION INSTRUCTIONS SHALL BE ON SITE AT TIME OF INSPECTION.

NO MORE THAN 1/3 OF THE TOTAL NUMBER OF C.P. SEISMIC MAY BE EXTENDED ABOVE 22.75 INCHES MEASURED FROM THE BASE OF THE PIER TO THE TOP PLATE OF THE PIER.

STATE APPROVAL

COMMERCIAL/MODULAR/COMMERCIAL COACH FOUNDATION SYSTEM HEALTH AND SAFETY CODE, SECTION 18551 APPROVED

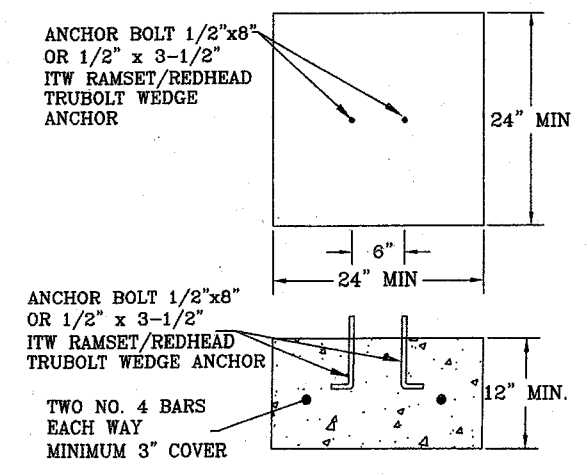
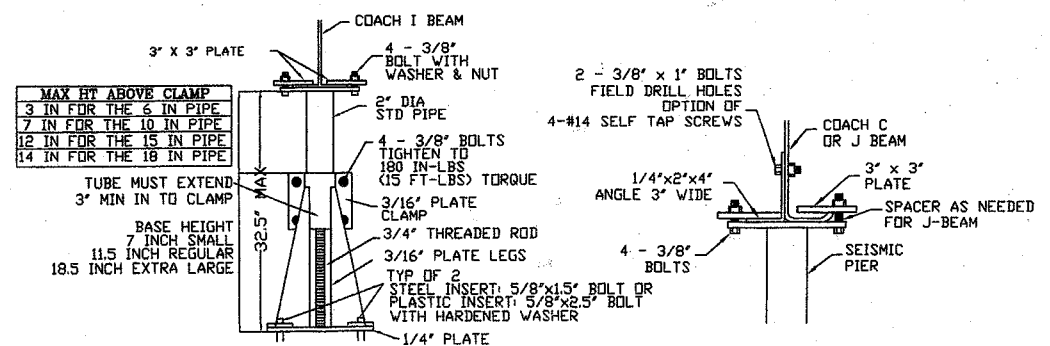
SUBJECT TO CORRECTIONS NOTED

APPROVAL DOES NOT AUTHORIZE OR APPROVE ANY OMISSIONS OR DEVIATION FROM REQUIREMENTS OF APPLICABLE STATE LAWS AND REGULATIONS

STATE OF CALIFORNIA DEPARTMENT OF HOUSING AND COMMUNITY DEVELOPMENT

DIVISION OF CODES AND STANDARDS

BY: *[Signature]* DATE: 6/25/08
SPA NO. 30-6F
THIS PLAN APPROVAL EXPIRES: 5/2/2010



IN-GROUND CONCRETE FOUNDATION PAD Not to Scale